

# PETERBILT

## 3 Series Cabs

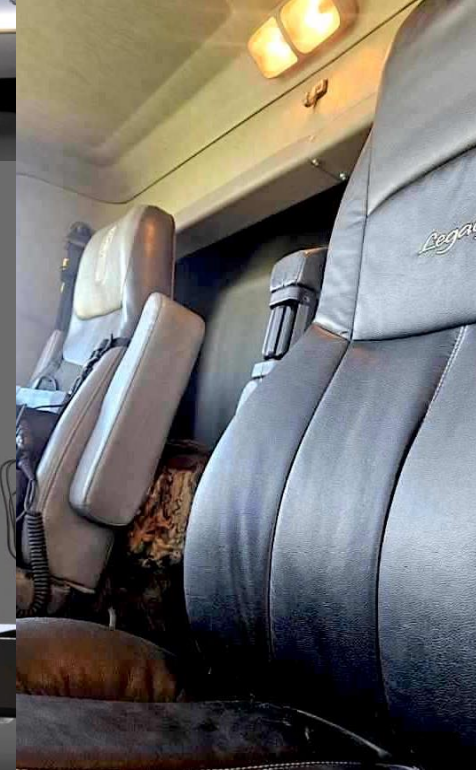


**ADD MORE ROOM  
TO YOUR OLD SCHOOL**

# DC-10

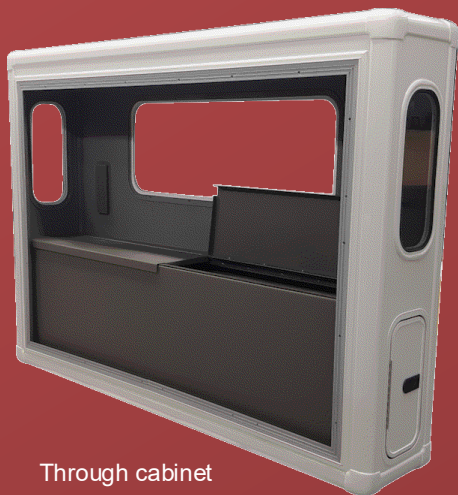


The DC-10 offers the perfect solution for drivers who need a little more room in the cab. With a DC-10, you get more leg room, seat recline, and belly room. Adding 17 cu ft of usable space in the cab allows you to add a center console, store your lunch cooler, or hang your wet coat. Add an optional back wall door for better ground access and stop climbing in and out of your cab to get your stuff. The DC-10 adds less than 90 lb to the cab weight without using valuable chassis space or impacting your GVW.





# DC-16



Through cabinet



Individual cabinets



Back Wall Door

Adding a little more working room is a great thing, side door access, and high visibility side windows is perfect for truck applications that have limited frame space. Operators can get the advantages of an increased driver room plus the working space. The side door or Optional back wall door access allows you to easily store wet boots, clothing, and tools to keep them out of the rain.



# DC-22



The DC-22 provides ample room to handle everything from paperwork to safety gear and equipment for hard working drivers. Optional full-access side or back wall doors provide easy storage from the ground to prevent slip accidents. Large side windows supply a complete view of the driver's surroundings. The DC-22 is also available with a rest bunk option that gives you full through storage under neath and a spot on top to lay down if you need a rest. This option does not meet the requirements of extended hours but does give you the ability to ret up while you wait on the landing to get loaded. The DC-22 adds 46 cu ft of fully customizable space and weighs less than 160 lb when installed.





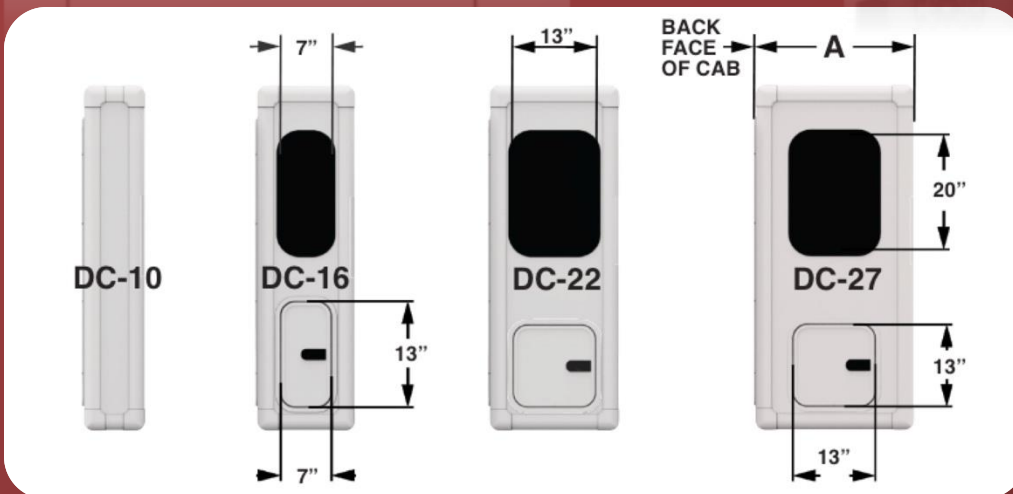
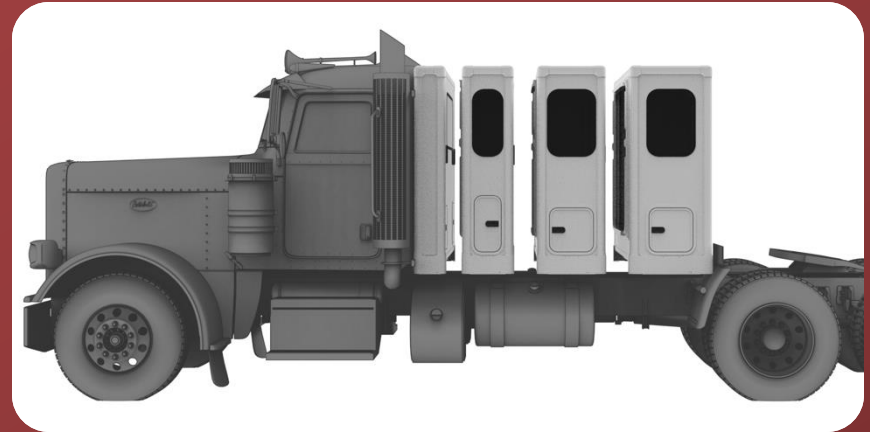
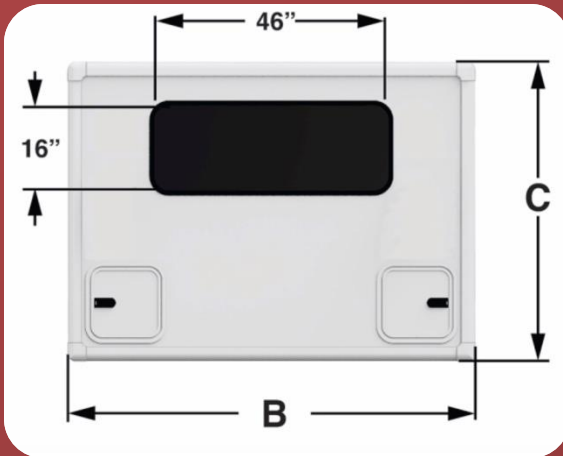
# DC-27



The DC-27 Rest cab sleeper lets you add a 24" x 80" mattress and a customizable vocational interior. The easy access side compartments allow the driver to Stowe items from the inside or outside. The short CA of the DC-27 is great for upgrading existing tractors where swing clearance is an issue or new truck chassis with minimum frame space weight challenges apply. Like the XD-22, the XD-27 has an additional airbag that improves your ride and supports extra loading.



# DIMENSIONS & DETAILS



	A	B	C
DC-10	11.5"	78"	64.5"
DC-16	18"	78"	64.5"
DC-22	23"	78"	64.5"
DC-27	27.5"	78"	64.5"